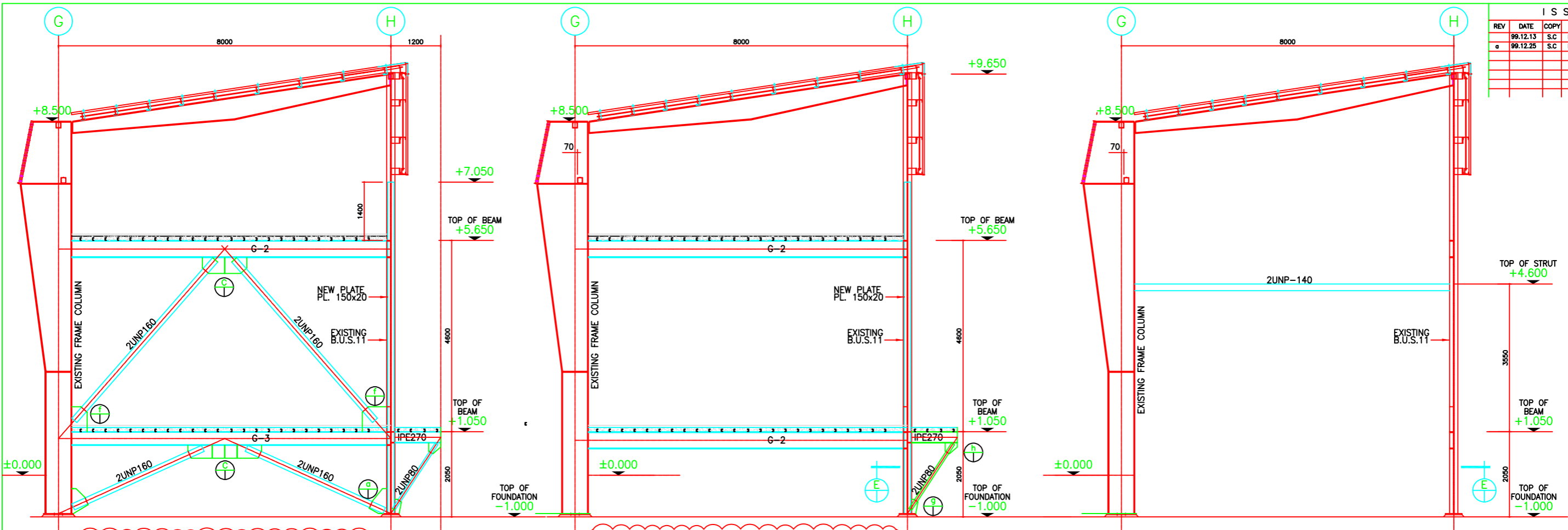


This document contains proprietary information, and except with written permission of "Andishehvarzan Sanat JAM" Consulting Engineers, such information shall not be published, or disclosed to others, or used for any purpose and documents shall not be duplicated in whole or in part.

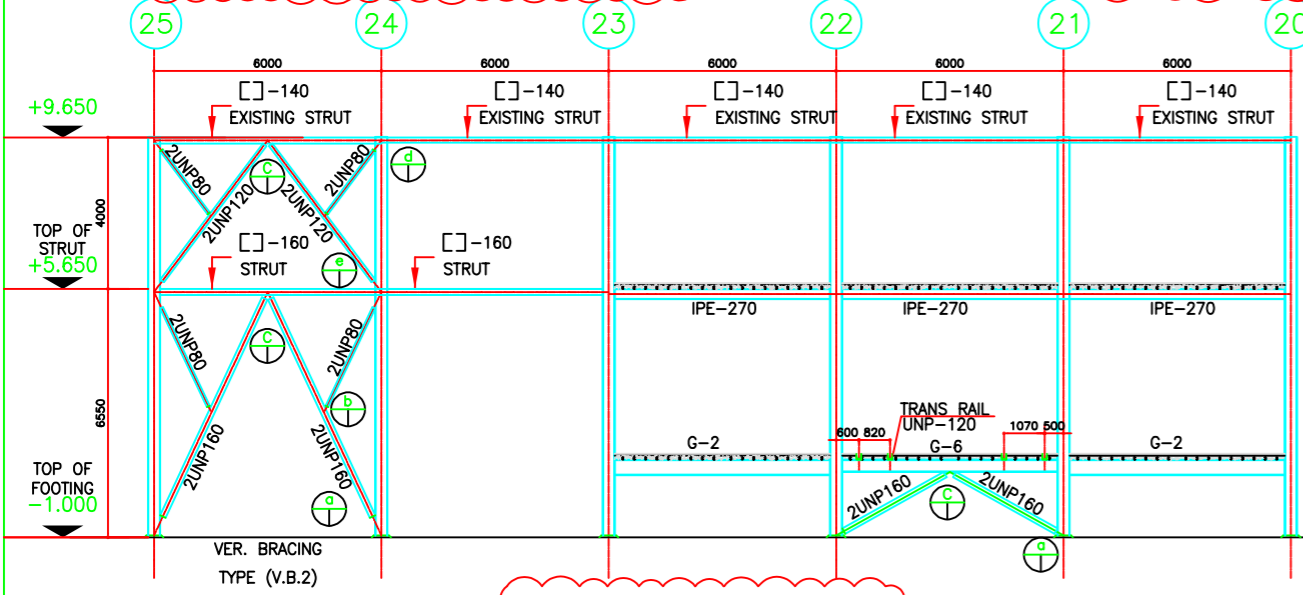
ISSUES				
REV	DATE	COPY	ISSUED TO	
99.12.13	S.C		KERMAN BAREZ TIRE CO.	
99.12.25	S.C		KERMAN BAREZ TIRE CO.	



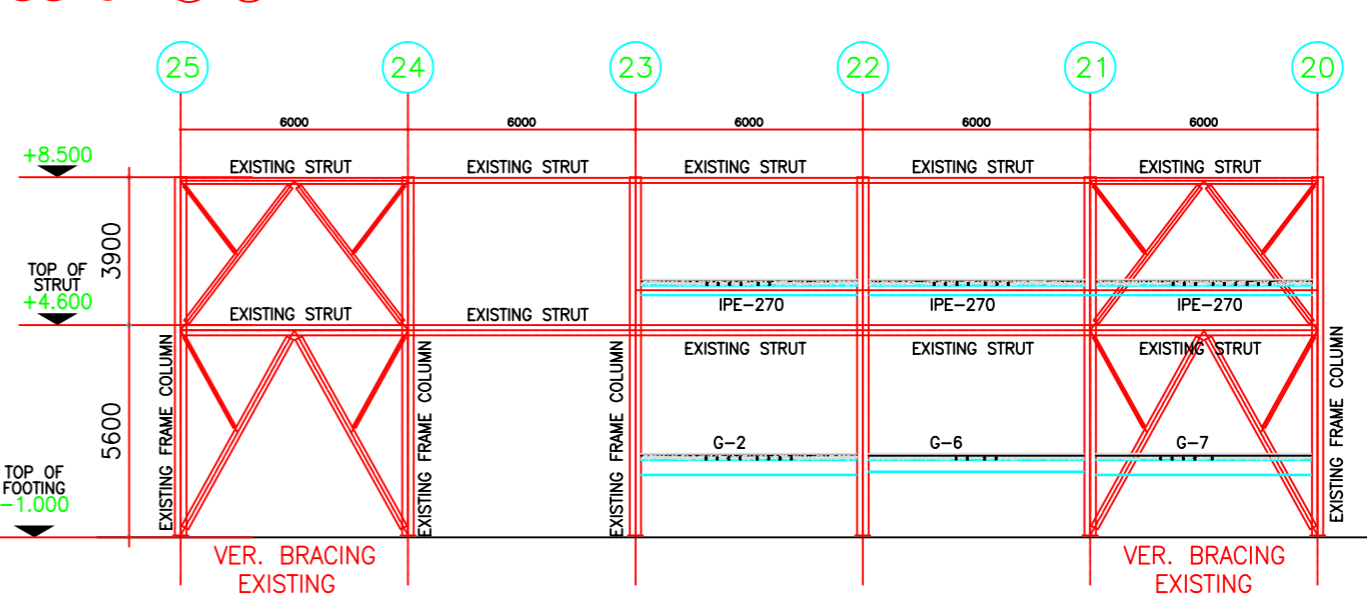
FRAMING AT ROWS "20" & "23" 1:50

FRAMING AT ROWS "21" & "22" 1:50

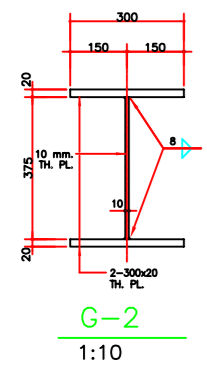
FRAMING AT ROWS "24" & "25" 1:50



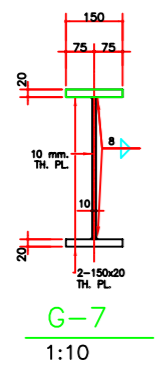
FRAMING AT ROWS "H" 1:100



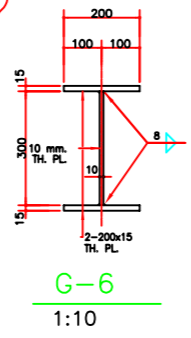
FRAMING AT ROWS "G" 1:100



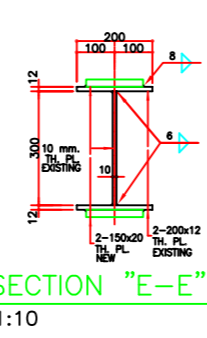
G-2 1:10



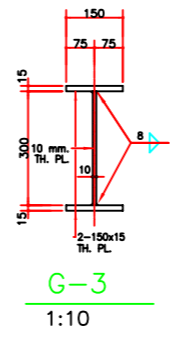
G-7 1:10



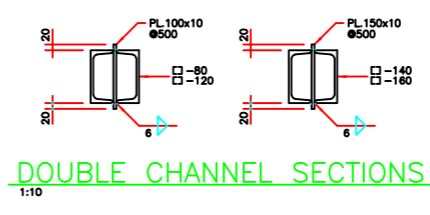
G-6 1:10



SECTION "E-E" 1:10



G-3 1:10

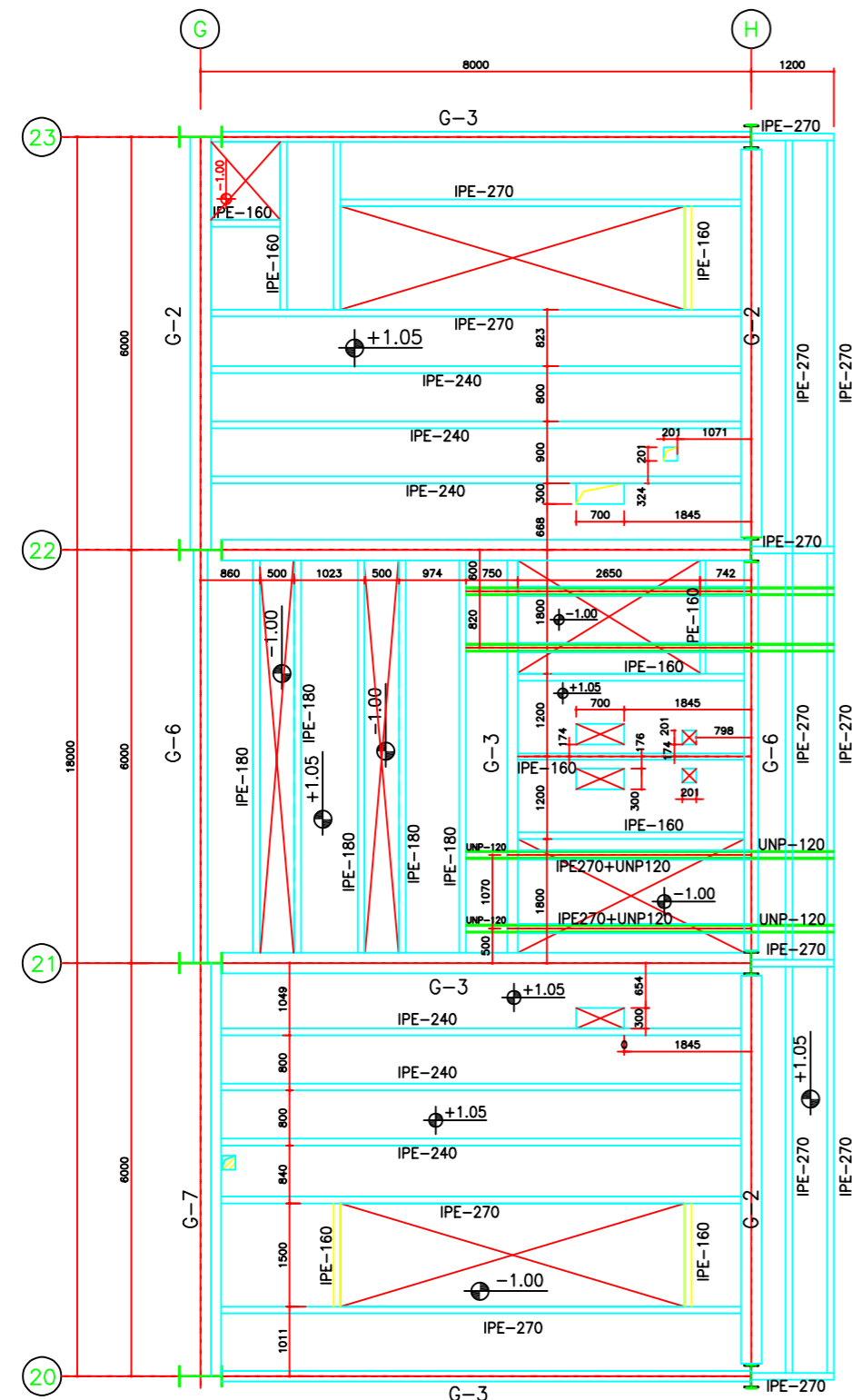


DOUBLE CHANNEL SECTIONS 1:10

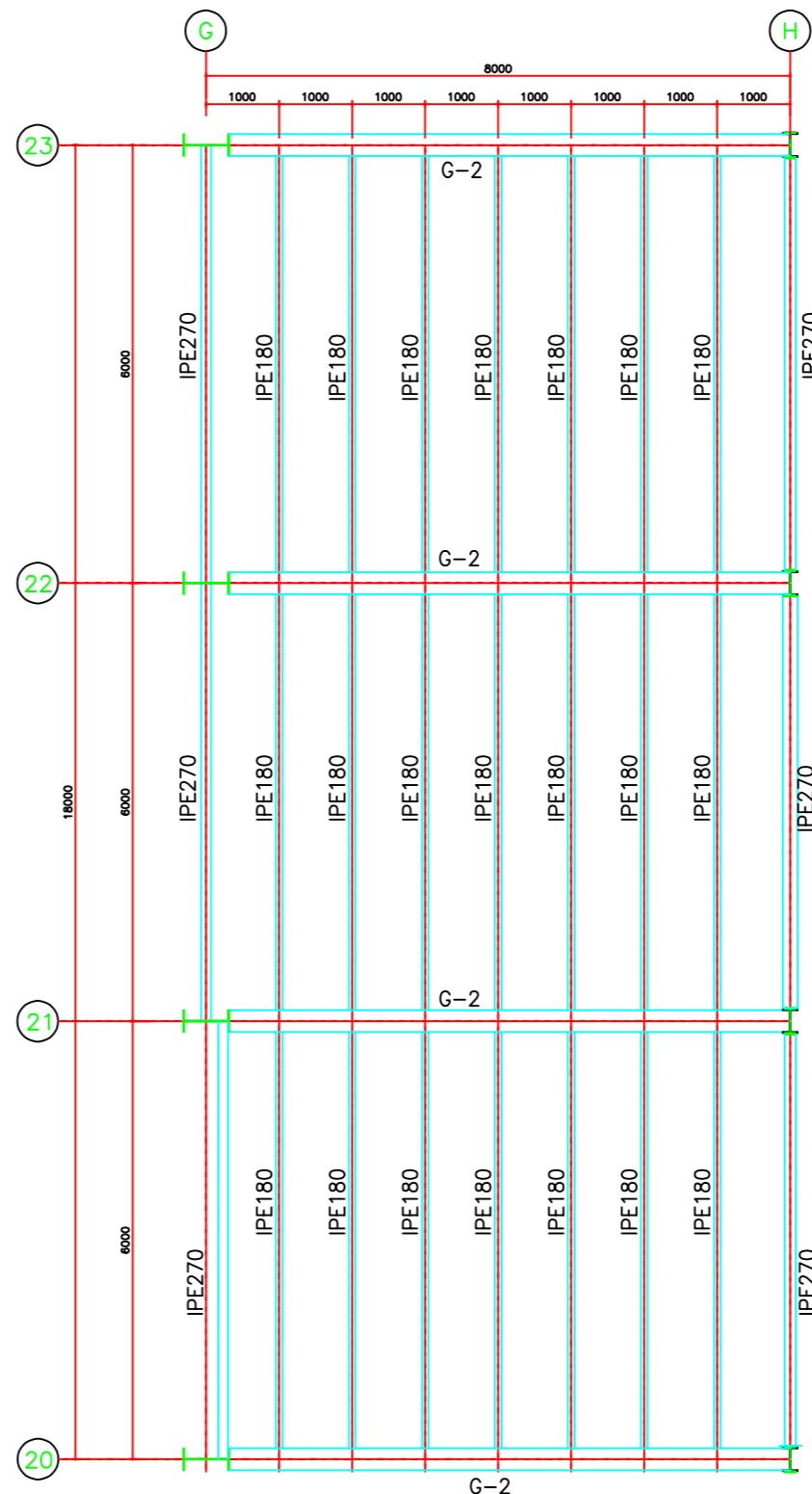
REV. NO.	OF Δ	DATE	REVISION	DRAWN	P.A.	CHE'D	APP'D	S.J.
99.12.25			PLATFORM DETAILS ARE ADDED		P.A.			S.J.

KERMAN BAREZ TIRE CO.		PROJECT NUMBER 9862	
RADIAL TIRE MANUFACTURING PLANT-KERMAN		DRAWING NUMBER REV.	
TIRE PRE-BUILDING(SUBSTATION)		1.622311 a	
SCALE AS SHOWN	FRAMING VIEW ● ROW "20" TO "25"	PROJECT	9862
DRAWN P.A.	FRAMING VIEW ● ROW "G" TO "H"	DRAWING NUMBER	REV.
CHECKED P.A.		1.622311	a
APPROVED S.J.	STEEL STRUCTURE		
DATE 99.12.13	CLIENT'S DRAWING NUMBER		
CAD FILE 62622311			

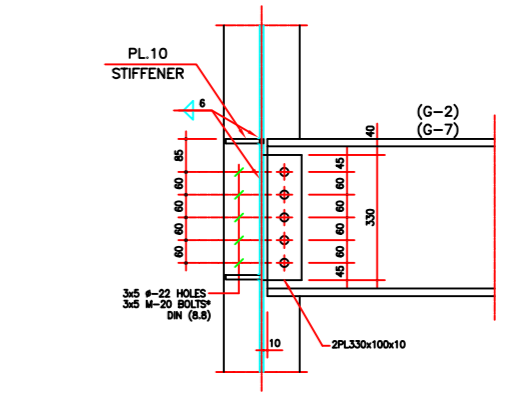
ISSUES				
REV	DATE	COPY	ISSUED TO	
99.12.13	S.C		KERMAN BAREZ TIRE CO.	
99.12.25	S.C		KERMAN BAREZ TIRE CO.	



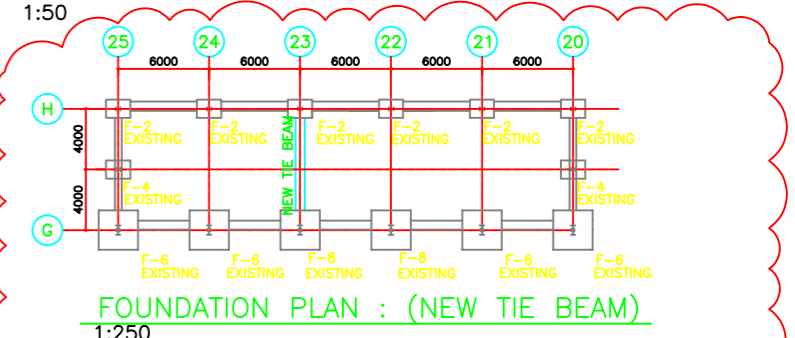
FRAMING PLAN AT ELEV. +1.05
1:50 TOP OF BEAM



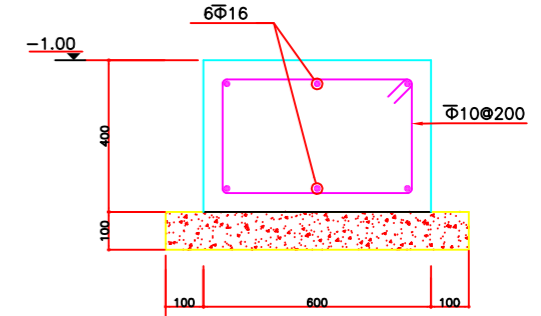
FRAMING PLAN AT ELEV. +5.65
1:50 TOP OF BEAM



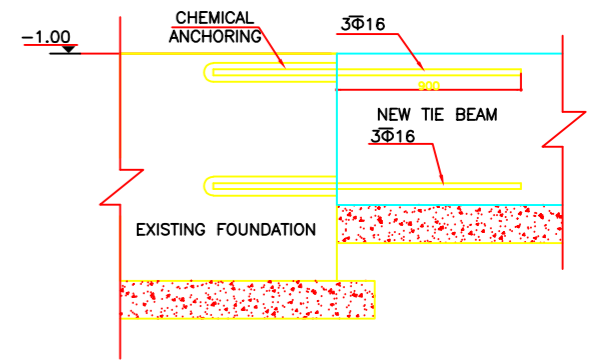
TYPICAL CONNECTION DETAIL OF PLATE GIRDER G-2 & G-7 TO COLUMN
1:50



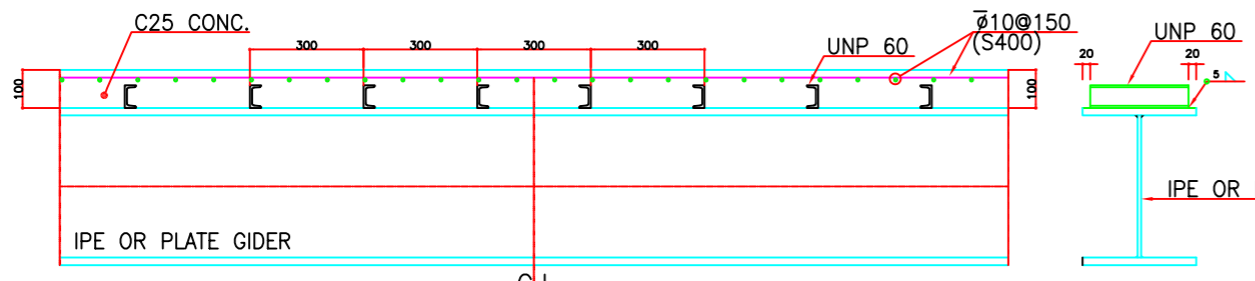
FOUNDATION PLAN : (NEW TIE BEAM)
1:250



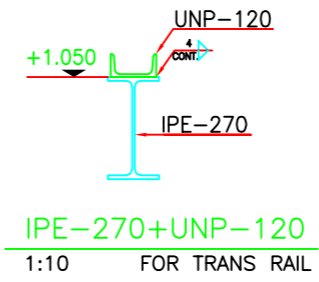
NEW TIE BEAM SECTION
1:10



CONNECTION DETAIL OF TIE BEAM TO EXISTING FOUNDATION
1:10



COMPOSITE BEAM DETAIL
1:10



IPE-270+UNP-120
1:10 FOR TRANS RAIL

REV.	NO. OF Δ	DATE	DESCRIPTION	P.A.	P.A.	S.J.
99.12.25			COMPOSITE BEAM DETAIL IS REVISED ACC. TO LETTER DATED 99.12.16 NO. 99/240/83			
99.12.13						

KERMAN BAREZ TIRE CO.
RADIAL TIRE MANUFACTURING PLANT-KERMAN
TIRE PRE-BUILDING(SUBSTATION)

Andishehvarzan Sanat CONSULTING ENGINEERS

SCALE AS SHOWN	PROJECT NUMBER 9862
DRAWN P.A.	FRAMING PLAN @ ELEV. +1.05 & +5.65
CHECKED P.A.	DRAWING NUMBER REV. 1.622312
APPROVED S.J.	
DATE 99.12.13	STEEL STRUCTURE
CAD FILE 62622312	CLIENT'S DRAWING NUMBER

This document contains proprietary information, and except with written permission of "Andishehvarzan Sanat JAM" Consulting Engineers, such information shall not be published, or disclosed to others, or used for any purpose and documents shall not be duplicated in whole or in part.

